



Concepts

Line	Line can define the edge of a contour or shape and can be straight, curved, broken or continuous, thick or thin. Lines can be used to represent texture and form by hatching and cross hatching.	
Form	Description of 3D shape, form has volume and occupies space: A cube or sphere, stone, shell or a fir cone.	
Shape	The unlimited 3-dimensional expanse in which all objects are located. The distance between two points. The illusion of space can be created through the use of colour, tone, linear perspective and scale.	
Value	Differences in light and dark, tint or shade of colour to show effect of light on colour and form. Lighter tones or tints can be made by adding black to a colour.	
Texture	Describes how something feels, the surface quality of an object. Rough, smooth, hard, soft, prickly, spikey, furry.	

Stone Age Cave Paintings

Stone Age artists used natural pigments (colours) to paint on the walls deep inside natural caves. Many cave paintings have been found in what are today France and Spain. Early artists painted very few human figures but they created images of many kinds of animals, such as mammoths, woolly rhinoceroses, horses and bison. Cave Paint artists ground up coloured rock into a powder. They used yellow ochre and red oxide rocks, as well as charcoal (burnt wood). This powder was mixed to a paste using spit, water, or animal fat, which helped the paint stick to the cave walls.



Skills

Design and evaluate:
Select and record from first hand observation, experience and imagination, and explore ideas for different purposes. Question and make thoughtful observations. Compare ideas and methods with others and adapt their work with improvements.

Drawing/sketching:
Make close observations. Produce initial sketches as a preparation for painting.

Painting:
Mix colours for a purpose. Introduce different types of brushes. Explore different techniques e.g. applying colour using dotting, scratching and splashing.





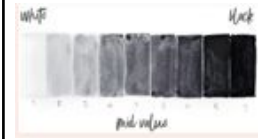
History of art (Understand the historical and cultural development of their art):
Learn about the work of great artists, architects and designers in history.

What is cave art?

Cave art are found in caves and shelters dating back to the Ice Age (Upper Paleolithic), roughly between 40,000 and 14,000 years ago. Most cave art consists of paintings made with either red or black pigment. The reds were made with iron oxides (hematite), and charcoal were used for the blacks.



Skills

Line 	<p>Short or continuous marks made using a variety of tools. Line can define the edge of a contour or shape and can be straight, curved, broken or continuous, thick or thin. Lines can be used to represent texture and form by hatching and cross hatching.</p>
Shape 	<p>Shape is created by enclosing a space using an outline.</p>
Space 	<p>The unlimited 3-dimensional expanse in which all objects are located.</p> <p>The distance between two points.</p> <p>The illusion of space can be created through the use of colour, tone, linear perspective and scale.</p>
Form 	<p>Description of 3D shape, form has volume and occupies space: A cube or sphere, stone, shell or a fir cone.</p>
Value 	<p>Differences in light and dark, tint or shade of colour to show effect of light on colour and form.</p> <p>Lighter tones or tints can be made by adding black to a colour.</p>

Georgia O'Keeffe

Georgia Totto O'Keeffe was born on 15th November 1887 in Wisconsin, USA.

Early life:

She was one of seven children, and her mother encouraged Georgia's interest in art.

The landscape in Wisconsin was very important to Georgia, which became evident in her later work.

She studied at the Art Institute of Chicago and had her first gallery show in 1916.

Flowers:

Georgia began experimenting with painting close up views of flowers. She used oil paints in vibrant, bold colours.

Later life:

Georgia O'Keeffe began to lose her eyesight and in 1972, she painted her last unassisted painting. She wrote a book and in 1977, at 90 years old.

Legacy:

Georgia O'Keeffe is recognised as being a pioneer of American modernism. She was highly praised for her art, which was unusual for a woman in a male dominated art world. She died on 6th March, 1986 aged 98 years old.



Observational Drawings

Observational art is to draw or paint a subject as accurately as possible. The subject may be a still life, figure model, portrait or landscape and the image must be created from real life rather than a photograph or the artist's imagination.

Skills

History of Art:

Learn about the work of a range of artists

Design + Evaluate:

Select and record from first hand observation, experience and imagination, and explore ideas for different purposes. Question and make thoughtful observations.




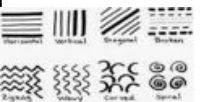



Compare ideas and methods with others and adapt their work with improvements.

Drawing:

Produce initial sketches as a preparation for painting.

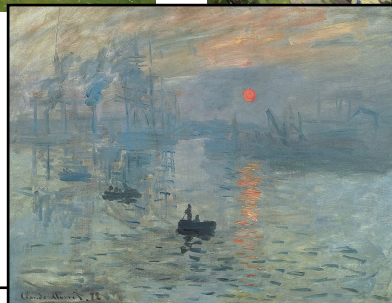
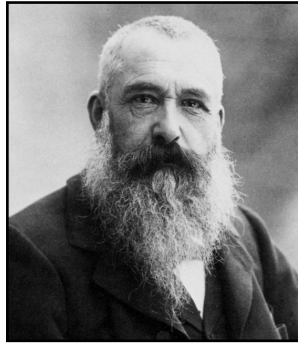


Skills

<p>Shape</p> 	<p>Shape is created by enclosing a space using an outline.</p>
<p>Value</p> 	<p>Differences in light and dark, tint or shade of colour to show effect of light on colour and form.</p> <p>Lighter tones or tints can be made by adding black to a colour.</p>
<p>Colour</p> 	<p>There are three primary colours: red, blue and yellow. They can be used to mix secondary colours: green, purple and orange.</p>
<p>Line</p> 	<p>Short or continuous marks made using a variety of tools. Line can define the edge of a contour or shape and can be straight, curved, broken or continuous, thick or thin. Lines can be used to represent texture and form by hatching and cross hatching.</p>
<p>Medium</p>	
<p>Oil pastel</p> 	<p>colours that go on smooth and blends easily.</p>
<p>Wax crayons</p> 	<p>writing implement consisting of a coloured stick of composition wax used for drawing</p>
<p>Watercolour paint</p> 	<p>Watercolor paint is a translucent art medium. The paint dissolves when you add water allowing the pigment to spread with a brush.</p>

Claude Monet

Oscar-Claude Monet 14 November 1840 - 5 December 1926) was a French painter and founder of **impressionist** painting who is seen as a key precursor to **modernism**, especially in his attempts to paint nature as he perceived it.



What is Impressionism Art?

Impressionism was a 19th-century **art movement** characterized by relatively small, thin, yet visible brush strokes, open **composition**, emphasis on accurate depiction of light in its changing qualities (often accentuating the effects of the passage of time), ordinary subject matter, unusual visual angles, and inclusion of movement as a crucial element of human perception and experience.

Progression Skills

- History of Art:** Learn about the work of a range of artists
- Design + Evaluate:** Select and record from first hand observation, experience and imagination, and explore ideas for different purposes. Question and make thoughtful observations. Compare ideas and methods with others and adapt their work with improvements.
- Drawing:** Produce initial sketches as a preparation for painting.
- Painting** Experiment with colour mixing and matching e.g. tint, tone and shade. Select suitable equipment for the task. Explore colour to reflect mood.



Skills

Line



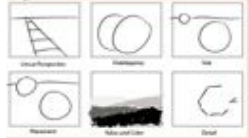
Short or continuous marks made using a variety of tools. Line can define the edge of a contour or shape and can be straight, curved, broken or continuous, thick or thin. Lines can be used to represent texture and form by hatching and cross hatching.

Shape



Shape is created by enclosing a space using an outline.

Space



The unlimited 3-dimensional expanse in which all objects are located.

The distance between two points.

The illusion of space can be created through the use of colour, tone, linear perspective and scale.

Form



Description of 3D shape, form has volume and occupies space: A cube or sphere, stone, shell or a fir cone.

Value



Differences in light and dark, tint or shade of colour to show effect of light on colour and form.

Lighter tones or tints can be made by adding black to a colour.

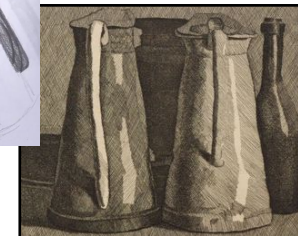
Giorgio Morandi

Giorgio Morandi (July 20, 1890 - June 1964) was an Italian painter and printmaker who specialized in still life.

His paintings are noted for their tonal subtlety in depicting apparently simple subjects, which were limited mainly to vases, bottles, bowls, flowers and landscapes. He taught drawing to school kids.

In 1914, the same year he had a brief sort of dalliance with the Italian Futurist movement, Morandi started teaching drawing in elementary schools in Bologna—a post he continued until 1930.

He didn't stray too far from home. Perhaps appropriate for an artist whose vision was so up close and personal, Morandi was known to stay near to the city of Bologna—the site of his birth and death and home still to a museum devoted to his work as well as his preserved studio, which one can visit for the sake of soaking up its atmosphere.



Skills

History of Art:

Learn about the work of a range of artists

Design + Evaluate:

Select and record from first hand observation, experience and imagination, and explore ideas for different purposes. Question and make thoughtful observations.

Compare ideas and methods with others and adapt their work with improvements.

Drawing:

Produce initial sketches as a preparation for painting.

What is observational drawing?

Anything can be drawn from observation, including objects and still life arrangements, figure and portrait studies, landscapes and other realistic views. You can draw in a variety of styles and with a range of media, processes and techniques. Observational drawing is **drawing what you see**. It can be a flower, a person, a still life, a landscape, or anything, really. But it's drawing what you see in front of you as realistically and as true to life as possible.



Concepts

Line	Line can define the edge of a contour or shape and can be straight, curved, broken or continuous, thick or thin. Lines can be used to represent texture and form by hatching and cross hatching.	
Shape	Shape is created by enclosing a space using an outline.	
Colour	There are three primary colours: red, blue and yellow. They can be used to mix secondary colours: green, purple and orange.	



Dave Griffin

Through repetition and practice his skills as an artist and a glazier have developed over time and have been greatly enhanced by attending various courses in areas such as traditional glass painting, silver staining and enamelling.

His aim is to produce windows which belong to their location, and which fully engage the viewer as well as providing decoration.

Inspiration comes from the beauty of shapes and forms found in nature, and many commissions are inspired by the landscape and flora of the Peak District.

Dave's natural inclination is towards more abstract styles which make use of curves and the shapes which emerge naturally from them.



Skills

History of Art:

Learn about the work of a range of artists

Design + Evaluate:

Select and record from first hand observation, experience and imagination, and explore ideas for different purposes. Question and make thoughtful observations. Compare ideas and methods with others and adapt their work with improvements.

Drawing:

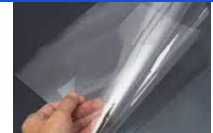
Produce initial sketches as a preparation for painting.

Painting:

Use different types of brushes. Explore different techniques e.g. applying colour using dotting, scratching and splashing

Resources

Transparency - a thin sheet of transparent flexible material



Glass liner- when using glass liner, do not leave any gaps as the glass paint will run.



Glass paint





Concepts

Line	Line can define the edge of a contour or shape and can be straight, curved, broken or continuous, thick or thin. Lines can be used to represent texture and form by hatching and cross hatching.	
Form	Description of 3D shape, form has volume and occupies space: A cube or sphere, stone, shell or a fir cone.	
Pattern	The arrangement of shapes, natural and man-made, decorative design on surface. (Zebra, tiger, daisy petals, brickwork, wallpaper, wrapping paper, fabric designs, patterns from other cultures).	
Value	Differences in light and dark, tint or shade of colour to show effect of light on colour and form. Lighter tones or tints can be made by adding black to a colour.	
Texture	Describes how something feels, the surface quality of an object. Rough, smooth, hard, soft, prickly, spikey, furry.	

Thomas Minton

Thomas Minton was an English potter. He founded Thomas Minton & Sons in Stoke-on-Trent, Staffordshire, which grew into a major ceramic manufacturing company with an international reputation. During the early 1780s Thomas Minton was an apprentice engraver at the Caughley Pottery Works in Shropshire, under the proprietorship of Thomas Turner, working on copperplate engravings for the production of transferware.^[1] The engraver Thomas Lucas went from there to work for Josiah Spode at Stoke-on-Trent in 1783, taking some elements of the fashionable chinoiserie patterns with him. While at Caughley Thomas Minton is thought to have worked on chinoiserie landscape patterns including willows, and to have prepared copperplates of them: but the Salopian works never produced the standard willow pattern which includes the bridge and the fence in the foreground.



Skills

History of Art:

Learn about the work of a range of artists

Design + Evaluate:

Select and record from first hand observation, experience and imagination, and explore ideas for different purposes. Question and make thoughtful observations. Compare ideas and methods with others and adapt their work with improvements.

Drawing:

Produce initial sketches as a preparation for painting.

Painting:

Use different types of brushes. Explore different techniques e.g. applying colour using dotting, scratching and splashing

What are Willow Patterns?

Willow Pattern has set characteristics. It features a pagoda structure, three figures on a bridge, a figure on a boat, two flying birds and, a weeping willow tree.

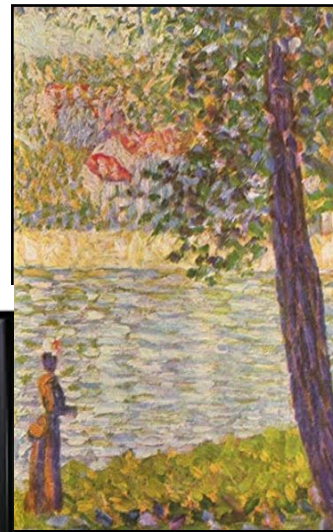
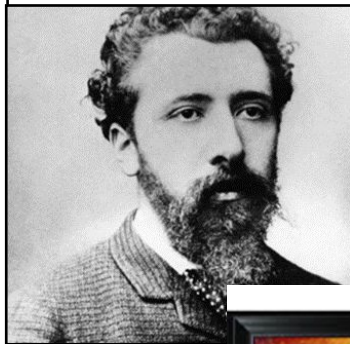


Concepts

<p>Line</p>	<p>Line can define the edge of a contour or shape and can be straight, curved, broken or continuous, thick or thin. Lines can be used to represent texture and form by hatching and cross hatching.</p>	
<p>Form</p>	<p>Description of 3D shape, form has volume and occupies space: A cube or sphere, stone, shell or a fir cone.</p>	
<p>Colour</p>	<p>There are three primary colours: red, blue and yellow.</p> <p>They can be used to mix secondary colours: green, purple and orange.</p>	
<p>Value</p>	<p>Differences in light and dark, tint or shade of colour to show effect of light on colour and form.</p> <p>Lighter tones or tints can be made by adding black to a colour.</p>	
<p>Texture</p>	<p>Describes how something feels, the surface quality of an object. Rough, smooth, hard, soft, prickly, spikey, furry.</p>	

George Seurat

Georges Seurat, (born December 2, 1859, Paris, France—died March 29, 1891, Paris), painter, founder of the 19th-century French school of Neo-Impressionism whose technique for portraying the play of light using tiny brushstrokes of contrasting colours became known as Pointillism. Using this technique, he created huge compositions with tiny, detached strokes of pure colour too small to be distinguished when looking at the entire work but making his paintings shimmer with brilliance.



Skills

History of Art: Compare and contrast the work of great artists, architects and designers in history.

Design + Evaluate: Select and record from first hand observation, experience and imagination, and explore ideas for different purposes. Question and make thoughtful observations. Compare ideas and methods with others and adapt their work with improvements.

Drawing: Record the effect of light on objects and people from different directions. Interpret the texture of a surface. Produce increasingly accurate drawings of people. Explore the concept of perspective.

Painting: Experiment with hues, tints, tones, shades and moods of colour. Explore the use of texture. Use colour for a variety of purposes.

What is impressionism?

Impressionism describes a style of painting developed in France during the mid-to-late 19th century; characterizations of the style include **small, visible brushstrokes that offer the bare impression of form, unblended colour and an emphasis on the accurate depiction of natural light.**



Concepts

<p>Line</p>	<p>Line can define the edge of a contour or shape and can be straight, curved, broken or continuous, thick or thin. Lines can be used to represent texture and form by hatching and cross hatching.</p>	
<p>Form</p>	<p>Description of 3D shape, form has volume and occupies space: A cube or sphere, stone, shell or a fir cone.</p>	
<p>Colour</p>	<p>There are three primary colours: red, blue and yellow.</p> <p>They can be used to mix secondary colours: green, purple and orange.</p>	
<p>Value</p>	<p>Differences in light and dark, tint or shade of colour to show effect of light on colour and form.</p> <p>Lighter tones or tints can be made by adding black to a colour.</p>	
<p>Texture</p>	<p>Describes how something feels, the surface quality of an object. Rough, smooth, hard, soft, prickly, spikey, furry.</p>	

Peter Thorpe

Peter Thorpe was born on November 9, 1957, in Portland, Oregon USA. He is a well-known Editorial Illustrator and a contemporary artist who has always loved Space. He is best known for his bold, vivid paintings.



Key Vocabulary

- abstract-** art which doesn't represent reality but rather uses shapes, colours and textures for an effect
- realistic-** art which represents things that are true to life
- cartoon-** a simplistic drawing/picture/painting
- background-** the part of a painting furthest away from the viewer
- foreground-** the part of a painting closest to the viewer
- painting techniques-** different methods of applying paint.

Skills

History of Art: Compare and contrast the work of great artists, architects and designers in history.

Design + Evaluate: Select and record from first hand observation, experience and imagination, and explore ideas for different purposes. Question and make thoughtful observations. Compare ideas and methods with others and adapt their work with improvements.

Drawing: Record the effect of light on objects and people from different directions. Interpret the texture of a surface. Produce increasingly accurate drawings of people. Explore the concept of perspective.

Painting: Experiment with hues, tints, tones, shades and moods of colour. Explore the use of texture. Use colour for a variety of purposes.



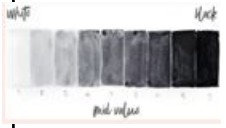
Skills

Line



Short or continuous marks made using a variety of tools. Line can define the edge of a contour or shape and can be straight, curved, broken or continuous, thick or thin. Lines can be used to represent texture and form by hatching and cross hatching.

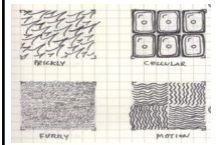
Value



Differences in light and dark, tint or shade of colour to show effect of light on colour and form.

Lighter tones or tints can be made by adding black to a colour.

Texture



Describes how something feels, the surface quality of an object. Rough, smooth, hard, soft, prickly, spikey, furry.

Shape



Shape is created by enclosing a space using an outline.

Medium

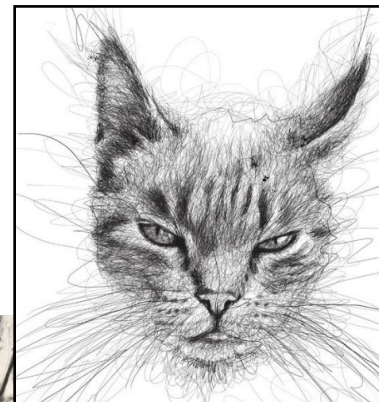
Charcoal



Natural charcoal sticks are the oldest sketching and drawing material in the world. The greyish-blue shade glides softly across the paper, rubs and smudges easily, and can be erased without difficulty and repeatedly overlaid.

William Kentridge

William Kentridge (born 28 April 1955) is a South African artist best known for his observational drawings, prints, drawings, and animated films. These are constructed by filming a drawing, making erasures and changes, and filming it again. He continues this process meticulously, giving each change to the drawing a quarter of a second to two seconds' screen time. A single drawing will be altered and filmed this way until the end of a scene. These palimpsest-like drawings are later displayed along with the films as finished pieces of art.



What is observational drawings?

Observational drawing is drawing what you see. It can be a flower, a person, a landscape, whatever. But it's a drawing of what you see in front of you, and it is as realistic and as true to life as possible.

Progression Skills

History of Art: Compare and contrast the work of great artists, architects and designers in history.

Design + Evaluate: Select and record from first hand observation, experience and imagination, and explore ideas for different purposes. Question and make thoughtful observations. Compare ideas and methods with others and adapt their work with improvements.

Drawing:

Record the effect of light on objects and people from different directions. Interpret the texture of a surface. Produce increasingly accurate drawings of people. Explore the concept of perspective.



Concepts

<p>Line</p>	<p>Line can define the edge of a contour or shape and can be straight, curved, broken or continuous, thick or thin. Lines can be used to represent texture and form by hatching and cross hatching.</p>	
<p>Form</p>	<p>Description of 3D shape, form has volume and occupies space: A cube or sphere, stone, shell or a fir cone.</p>	
<p>Pattern</p>	<p>The arrangement of shapes, natural and man-made, decorative design on surface. (Zebra, tiger, daisy petals, brickwork, wallpaper, wrapping paper, fabric designs, patterns from other cultures).</p>	
<p>Scale</p>	<p>Scale refers to the overall physical size of an artwork. We can relate scale to the size of the human body - how big or small the piece is in relation to us.</p>	
<p>Texture</p>	<p>Describes how something feels, the surface quality of an object. Rough, smooth, hard, soft, prickly, spikey, furry.</p>	

Käthe Kollwitz

Käthe Kollwitz was a German artist who worked with painting, printmaking and sculpture.

Her most famous art cycles, including *The Weavers* and *The Peasant War*, depict the effects of poverty, hunger and war on the working class.

Recognizing her talent, Kollwitz's father arranged for her to begin lessons in drawing and copying plaster casts on 14 August 1879 when she was twelve. In 1885-6 she began her formal study of art under the direction of [Karl Stauffer-Bern](#), a friend of the artist [Max Klinger](#), at the School for Women Artists in Berlin. At sixteen she began working with subjects associated with the [Realism](#) movement, making drawings of working people, sailors and peasants she saw in her father's offices.

1867-1945



Skills

History of Art:

Compare and contrast the work of great artists, architects and designers in history.

Design + Evaluate:

Select and record from first hand observation, experience and imagination, and explore ideas for different purposes. Question and make thoughtful observations. Compare ideas and methods with others and adapt their work with improvements.

Drawing and sketching:

Interpret the texture of a surface. Produce increasingly accurate drawings of people. Explore the concept of perspective.

Modelling/sculpture:

Use natural and man-made materials to make collaborative 3-D sculptures.

Clay Sculpture Techniques

I think gentle and slow, when I am working with moist clay. Remember, gentle and slow.

I can roll Balls of clay.

I can roll snakes with clay.

I can squeeze the clay.

I can pull forms out of the clay.

I can carefully scratch designs into the clay.

I can gently smooth the clay to give it a finished look and feel.

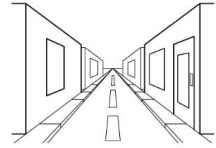
I can add clay pieces to my sculpture by simply sticking them together and pressing firmly.

I can subtract (take away) pieces of clay. I can use tools or my fingers.



Concepts

perspective



Perspective drawing is a technique to create the linear illusion of depth. As objects get further away from the viewer they appear to decrease in size at a constant rate.

colour



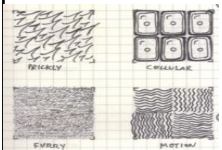
There are three primary colours: **red**, **blue** and **yellow**.

They can be used to mix secondary colours: green, purple and orange.

Shape



Shape is created by enclosing a space using an outline.



Describes how something feels, the surface quality of an object. Rough, smooth, hard, soft, prickly, spikey, furry.

line



Line can define the edge of a contour or shape and can be straight, curved, broken or continuous, thick or thin. Lines can be used to represent texture and form by hatching and cross hatching.

David Hockney

David Hockney was born in 1937 in Bradford, England. David studied at the Royal College of Art in London.

He contributed to the pop art movement of the 1960s and, in 2011, he was voted the most influential artist of 1000 British nominees.

Hockney began painting using oil paints but moved on to acrylics to create a smooth, bold sheen to the painting. Acrylic paint is thick, bold and dries quicker than oil paints. An example of Hockney's work in acrylic is 'Mulholland Drive: The Road to the Studio' which David painted in 1980.



Skills

History of Art:

Compare and contrast the work of great artists, architects and designers in history.

Design + Evaluate:

Select and record from first hand observation, experience and imagination, and explore ideas for different purposes.

Question and make thoughtful observations. Compare ideas and methods with others and adapt their work with improvements.

Drawing and sketching:

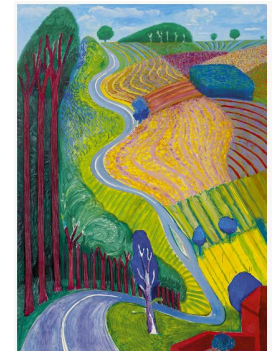
Interpret the texture of a surface. Explore the concept of perspective.

Painting

Explore and apply different hues, tints, tones, shades and moods of colour.

Apply the use of texture.

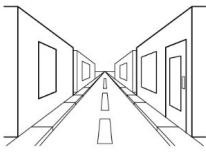


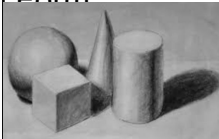
Use colour for a variety of purposes.

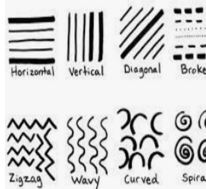


Going Up Garrowby Hill, 2000



Concepts

<p>perspective</p> 	<p>Perspective drawing is a technique to create the linear illusion of depth. As objects get further away from the viewer they appear to decrease in size at a constant rate.</p>
<p>colour</p> 	<p>There are three primary colours: red, blue and yellow.</p> <p>They can be used to mix secondary colours: green, purple and orange.</p>
<p>Shape</p> 	<p>Shape is created by enclosing a space using an outline.</p>
<p>Form</p> 	<p>Description of 3D shape, form has volume and occupies space: A cube or sphere, stone, shell or a fir cone.</p>

<p>line</p> 	<p>Line can define the edge of a contour or shape and can be straight, curved, broken or continuous, thick or thin. Lines can be used to represent texture and form by hatching and cross hatching.</p>
--	---

Laurence Stephen Lowry

Laurence Stephen Lowry (1 November 1887 - 23 February 1976) was an English artist. His drawings and paintings mainly depict **Pendlebury, Greater Manchester** (where he lived and worked for more than 40 years) as well as **Salford** and its vicinity.

Lowry is famous for painting scenes of life in the **industrial districts** of **North West England** in the mid-20th century. He developed a distinctive style of painting and is best known for his urban landscapes peopled with human figures, often referred to as "matchstick men". He was fascinated by the sea, and painted pure seascapes, depicting only sea and sky, from the early 1940s.^[2]

His use of stylised figures which cast no shadows, and lack of weather effects in many of his landscapes led critics to label him a **naïve** "Sunday painter".



Lowry at work



Skills

History of Art:
Compare and contrast the work of great artists, architects and designers in history.

Design + Evaluate:
Select and record from first hand observation, experience and imagination, and explore ideas for different purposes.
Question and make thoughtful observations. Compare ideas and methods with others and adapt their work with improvements.

Drawing and sketching:
Interpret the texture of a surface.
Explore the concept of perspective.

Painting
Explore and apply different hues, tints, tones, shades and moods of colour.
Apply the use of texture.
Use colour for a variety of purposes.

